



TENNYSON 159 HOUSE 165

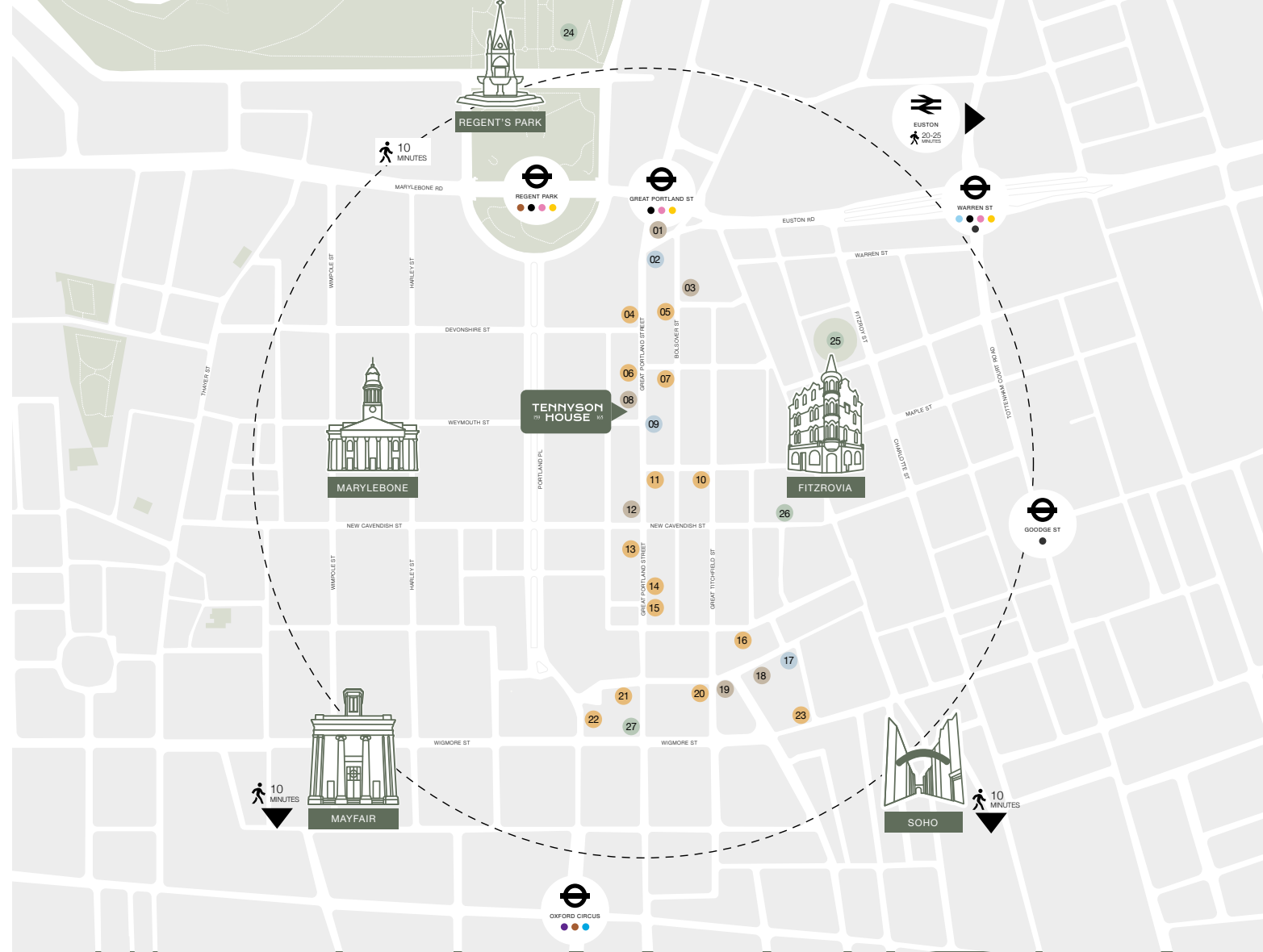


159, 165 Great Portland St, London W1W 5PA

PART OF *fitzrovia*Co

WELCOME TO GREAT PORTLAND STREET

Discover the vibrant business community on Great Portland Street in the prestigious Fitzrovia neighborhood, offering easy access to Soho, Mayfair, and Marylebone. With excellent transport links, world-class amenities, and the tranquility of Regents Park nearby, it's an ideal location for professionals. At FitzroviaCo, we aim to redefine the real estate experience by creating environments where businesses thrive and individuals flourish, focusing on innovation, sustainability, and community to shape the future of urban living and working.



DISCOVER WORLD-CLASS AMENITIES RIGHT AT YOUR DOORSTEP IN FITZROVIA.

- 01 Black Sheep Coffee
- 02 The Albany
- 03 Peyton and Byrne Bakeries
- 04 Ibérica Marylebone (PART OF FITZROVIACO)
- 05 Honey & Smoke Grill House
- 06 Kibele Restaurant (PART OF FITZROVIACO)
- 07 Dermatino
- 08 Starbucks (PART OF FITZROVIACO)
- 09 Sixes Social Cricket
- 10 Caravan Fitzrovia Restaurant
- 11 Clipstone
- 12 GAIL'S Bakery Great Portland Street
- 13 Portland (PART OF FITZROVIACO)
- 14 Sushi Atelier
- 15 Kibako London
- 16 Meraki Greek Restaurant & Bar Fitzrovia
- 17 The Green Man
- 18 Scandinavian Kitchen
- 19 Kaffine Coffee
- 20 Riding House Fitzrovia
- 21 Madera at Treehouse London
- 22 The Wigmore
- 23 Mortimer House Kitchen
- 24 Regent's Park
- 25 Fitzroy Square Garden
- 26 Rumble
- 27 Psyche Oxford Circus

● PUB / BAR ● COFFEESHOP ● PARK / GYM ● RESTAURANT



SPACE AVAILABILITY

5TH FLOOR
PART FLOOR
1,744 SQ FT | 16 DESKS

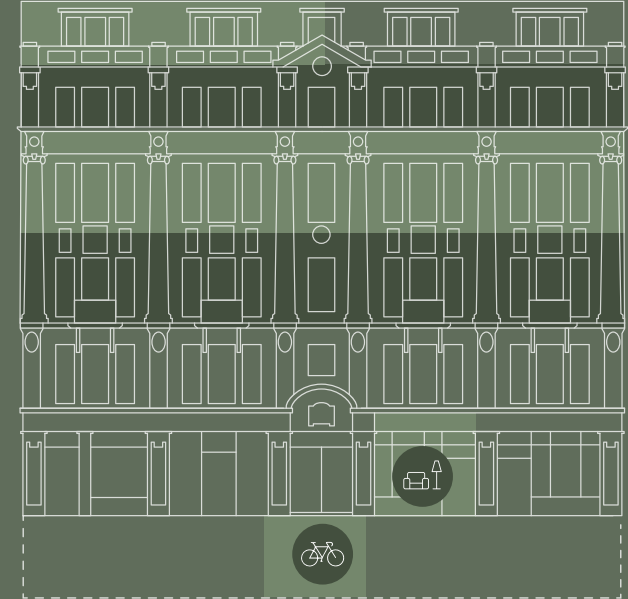
4TH FLOOR
3,746 SQ FT | 38 DESKS

3RD FLOOR
3,528 SQ FT | 38 DESKS

2ND FLOOR
3,754 SQ FT | 38 DESKS

TENANT LOUNGE
GROUND FLOOR

CYCLE STORE
BASEMENT



TIMELESS ARCHITECTURE, CONTEMPORARY WORKSPACES



TENANT LOUNGE



CYCLE STORAGE



FULLY FITTED OFFICE SUITES



LOCKERS AND SHOWER FACILITY



OWN FRONT DOOR



GREAT CONNECTIVITY



SUSTAINABILITY FOCUS



ORIGINAL ARCHITECTURAL FEATURES



PLACEHOLDER



PLACEHOLDER

BASEMENT

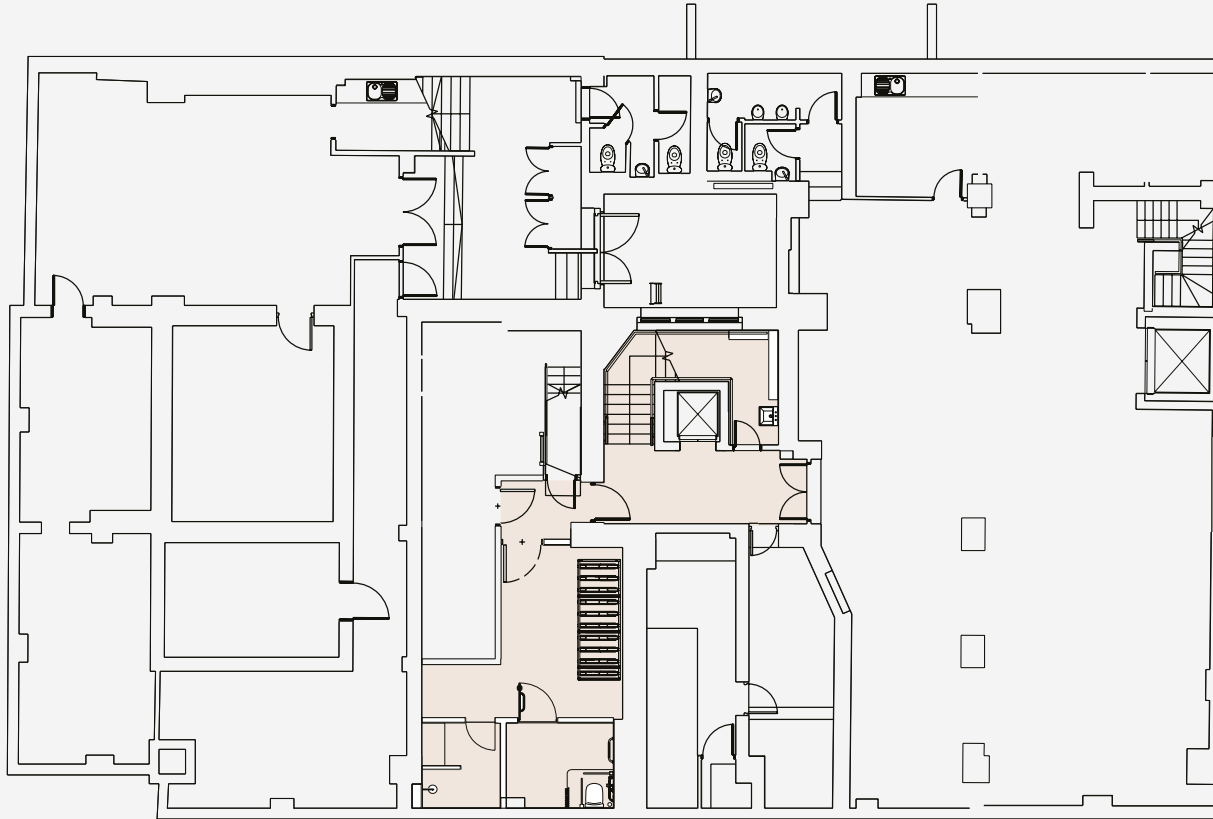
SPECIFICATION

NIA 277 sqm / 2,978 sqft



AMENITY

Cycle Store



GROUND FLOOR

SPECIFICATION

NIA 257 sqm / 2,766 sqft

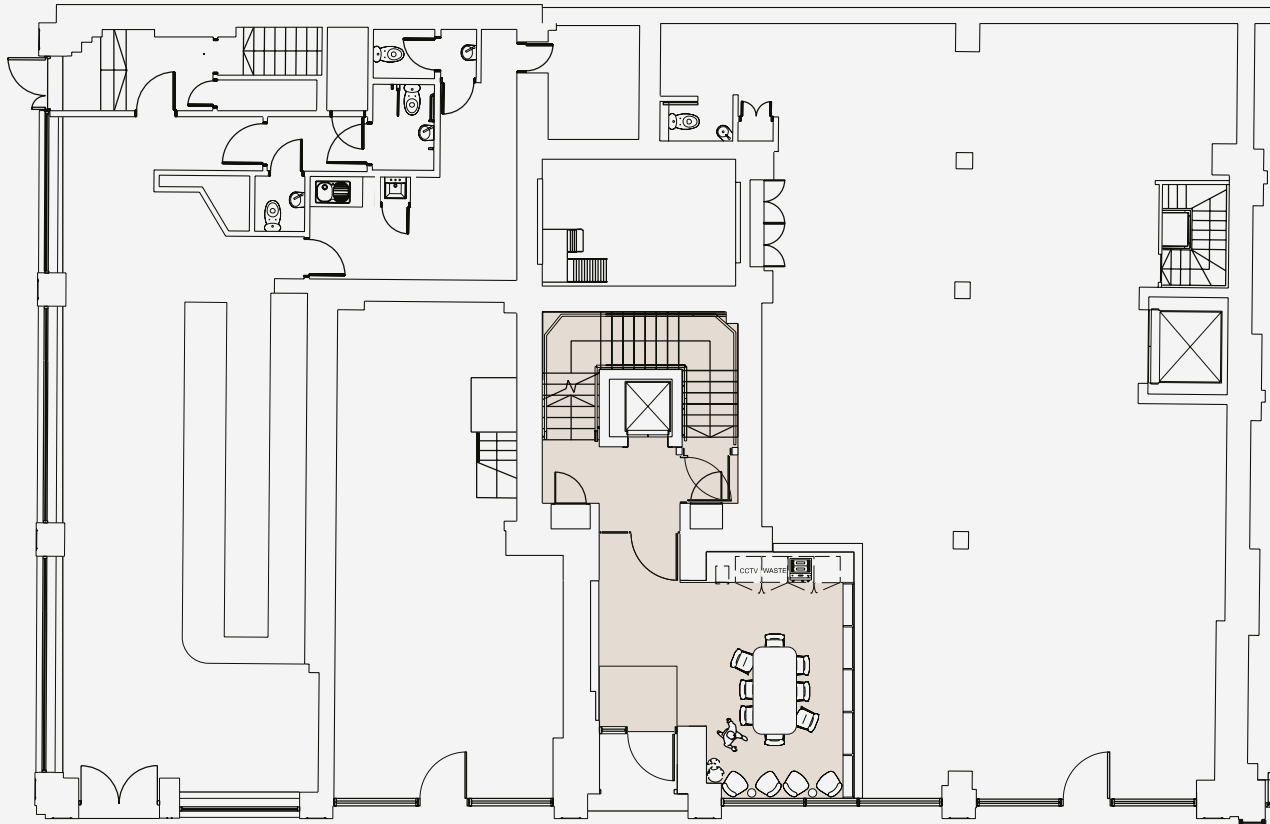
EPC
*Targeted



BREAKOUT

Tenant Lounge

Kitchen with 8-Person Island

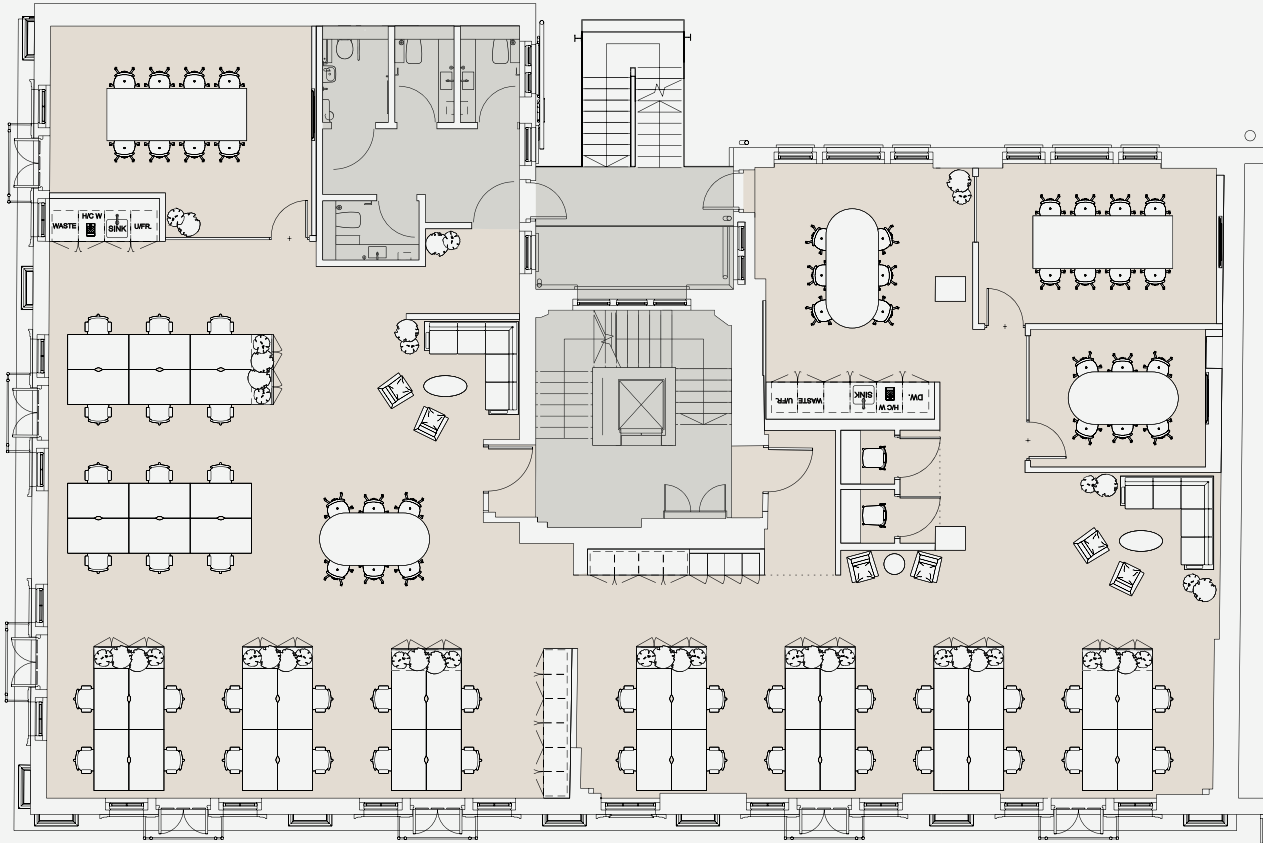


SECOND FLOOR

SPECIFICATION

NIA 348 sqm / 3,754 sqft

EPC
*Targeted



WORKSTATIONS

38 Fixed Workstations



BREAKOUT

Welcome Lounge
Kitchen with 6-Person Island
Soft Seating Meeting



MEETING

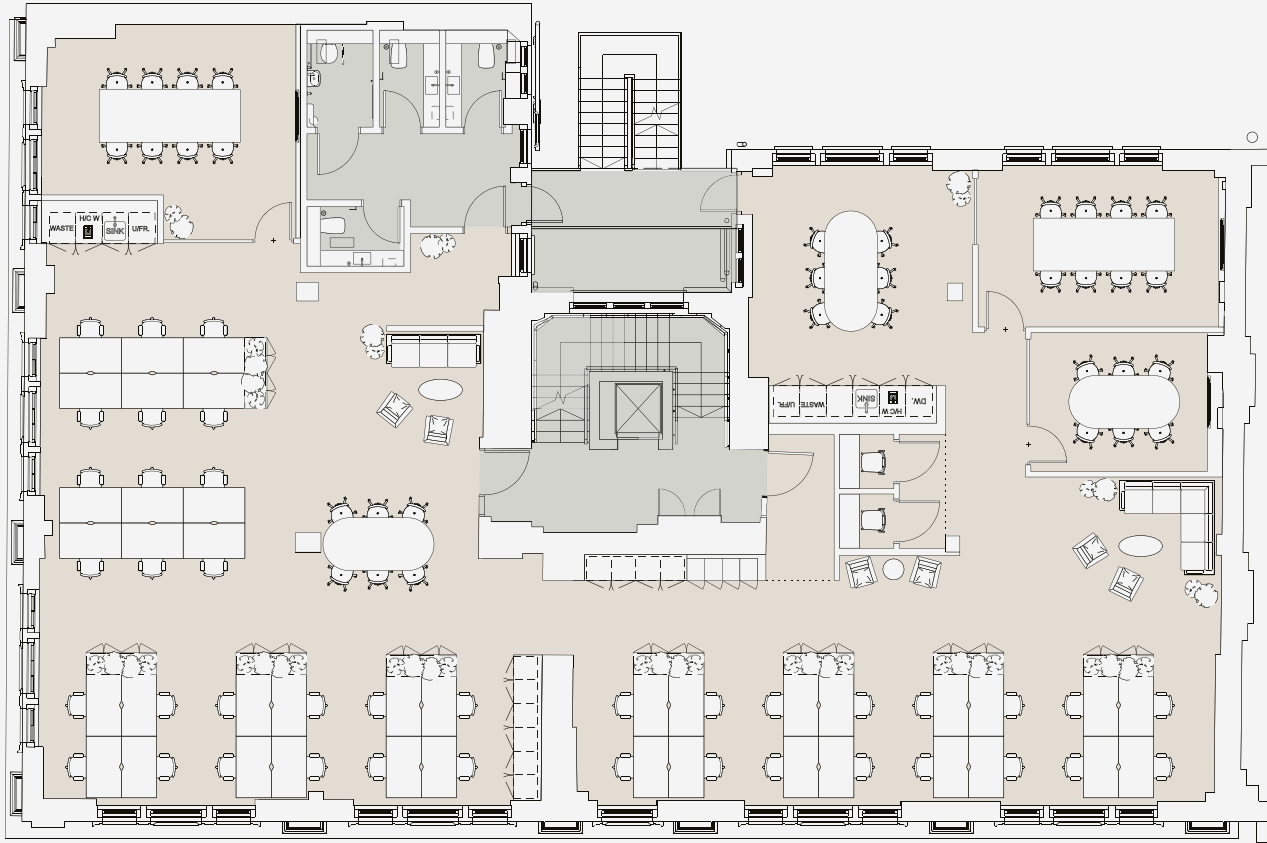
2 x 1 -Focus Rooms
1 x 6 -Person Meeting
1 x 6-Person Collaboration Table
2 x 8-10 Person Meeting



AMENITY

Suite Accessed WCs
High Speed WiFi

THIRD FLOOR



SPECIFICATION

NIA 328 sqm / 3,528 sqft

EPC
*Targeted



WORKSTATIONS

38 Fixed Workstations



BREAKOUT

Welcome Lounge
Kitchen with 6-Person Island
Soft Seating Meeting



MEETING

2 x 1-Focus Rooms
1 x 6-Person Meeting
1 x 6-Person Collaboration Table
2 x 8-10 Person Meeting



AMENITY

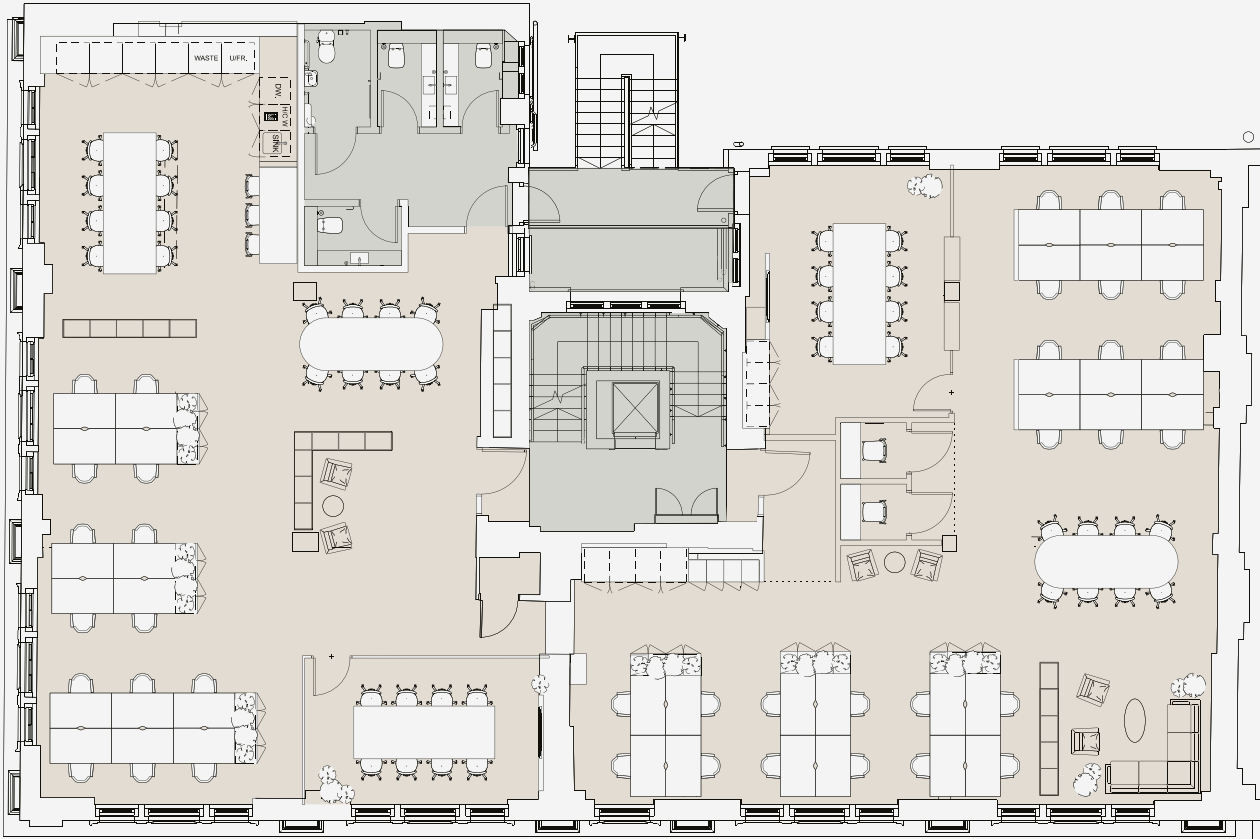
Suite Accessed WCs
High Speed WiFi

FOURTH FLOOR

SPECIFICATION

NIA 348 sqm / 3,746 sqft

EPC
*Targeted



WORKSTATIONS

38 Fixed Workstations



BREAKOUT

Welcome Lounge
Kitchen with 8-10 Person Island
Banquette Seating



MEETING

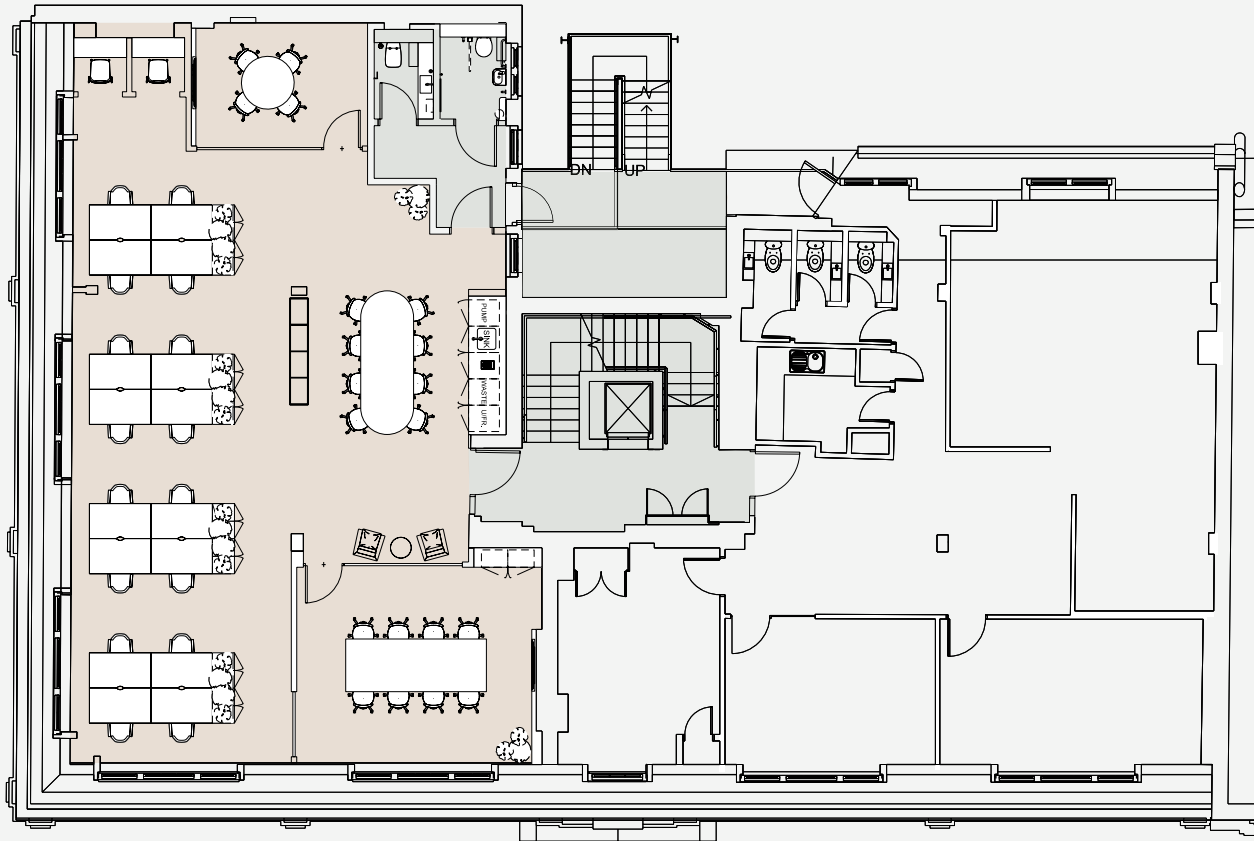
2 x 1 -Focus Rooms
1 x 8-10 Person Collaboration Table
2 x 8-10 Person Meeting



AMENITY

Suite Accessed WCs
High Speed WiFi

FIFTH FLOOR



SPECIFICATION

NIA 162 sqm / 1,744 sqft

EPC
*Targeted



WORKSTATIONS
18 Fixed Workstations



BREAKOUT
Welcome Lounge
Kitchen with 8-10 Person Island
Banquette Seating



MEETING
1 x 4 - Person Meeting
1 x 8-10 Person Collaboration Table
1 x 8-10 Person Meeting



AMENITY
Suite Accessed WCs
High Speed WiFi



RENT

POA

RATES

POA

SERVICE CHARGE

POA

TOTAL OUTGOINGS

POA

FIBRE

**FULLY CONNECTED
PLUG AND PLAY**

EPC

TARGETED B+

Colliers

Alex Kemp
Alex.Kemp@colliers.com
+44 7881 610962

Max Chalk
Max.Chalk@colliers.com
+44 7522 867157

Joseph Mishon
Joseph.Mishon@colliers.com
+44 7876 724488

RX LONDON

Catherine Lloyd
Catherine.lloyd@rx.london
+44 7795 445833

Jack Rose
Jack.rose@rx.london
+44 7590 814753

Jack Moates
Jack.moates@rx.london
+44 7494 232394

PART OF

*fitzrovia*co

MANAGED BY

Oval

BRAND BY

kin